

Dominique Perrault Architect

**10 YEARS COMMEMORATION**  
EWhA WOMANS UNIVERSITY  
**2008 - 2018**



Ewha Campus © Ewha Womans University.

PRESS KIT

DPA  
6, rue Bouvier 75011 Paris  
[www.perraultarchitecture.com](http://www.perraultarchitecture.com)  
+33 (0) 1 44 06 00 00

Press contact DPA  
Camille Abeille  
[cabeille@d-pa.fr](mailto:cabeille@d-pa.fr)

THE 10TH ANNIVERSARY OF EWHA CAMPUS COMPLEX  
DOMINIQUE PERRAULT ARCHITECT

On May 17th, 2018, the Ewha Campus Complex will celebrate the 10th anniversary of its opening during a day of meetings and festivities. An opportunity to rediscover the history of this landscape-building, a major public space for the student social life, opened to the city of Seoul and an emblematic building of a «Groundscape» architecture.

*The 17th Kim Okgill Memorial Lecture will be held under the theme of “Space for Empathy and Companionship: Celebrating the 10th Anniversary of the ECC’s Construction, and Contemplating the Space of Ewha.”*

*Titled “Topography - A Groundscape Story” the world-renowned architect Dominique Perrault’s lecture ponders upon the notion of an empathic life based on the space of the ECC (Ewha Campus Complex), which was established in 2008 with the aim of embracing the educational vision of Ewha Womans University for the 21st century. This lecture will showcase the architectural philosophy that Professor Perrault instilled in the ECC. The lecture, “A Space for Dreams: The History of the Space of Ewha and Its Completion by Practical Action,” which will be presented by Professor Kim, Ae-Ryung from the Ewha Institute for the Humanities, highlights that the space of Ewha was completed through the practice of various actors, and reflects on the history and future of the communal space of the Ewha campus.*

*In addition to the two thought-provoking lectures, this memorial event will also present a variety of programs including the ECC’s 10th anniversary celebration, a music festival “With Music”, and a movie festival “With Movie” for all those in the Ewha community to enjoy. Please enjoy this opportunity on a brilliant day in May to share the time and space of empathy and companionship at Ewha throughout its 132 years of tradition. We sincerely hope that you would grace us with your attendance. April 2018*

*Kim, Heisook  
President of Ewha Womans University  
Jeon, Hyeyoung  
Director of Ewha Institute for the Humanities*



Ewha Campus ©Gaëlle Lauriot-Prévost/Dominique Perrault Architecte/Adapp

THE 10TH ANNIVERSARY OF EWHA CAMPUS COMPLEX  
DOMINIQUE PERRAULT ARCHITECT



Ewha Campus © Ewha Womans University.

**PROGRAM 17 MAY 2018**

Samsung Hall & Ewha Campus

**Lectures and Ceremony**

**Part I**

4:00pm: Moderator: Lee, Suan (Professor, Ewha Institute for the Humanities)  
Opening: Jeon, Hyeyoung (Director, Ewha Institute for the Humanities)  
Greeting: Kim, Heisook (Président, Ewha Womans University)  
Introduction of distinguished guests

4:20pm: **«A Space for Dreams - The History of the Space of Ewha and Its Completion by Practical Action»**, Kim Ae-Ryung (Professor, Ewha Institute for the Humanities)

**Part II**

4:50pm: Moderator: Kang, Miseon (Professor, Dept. of Architecture)  
**«Topography - A Groundscape Story»** Dominique Perrault  
(Architect, professor EPFL, Switzerland)

6:00pm: Discussion

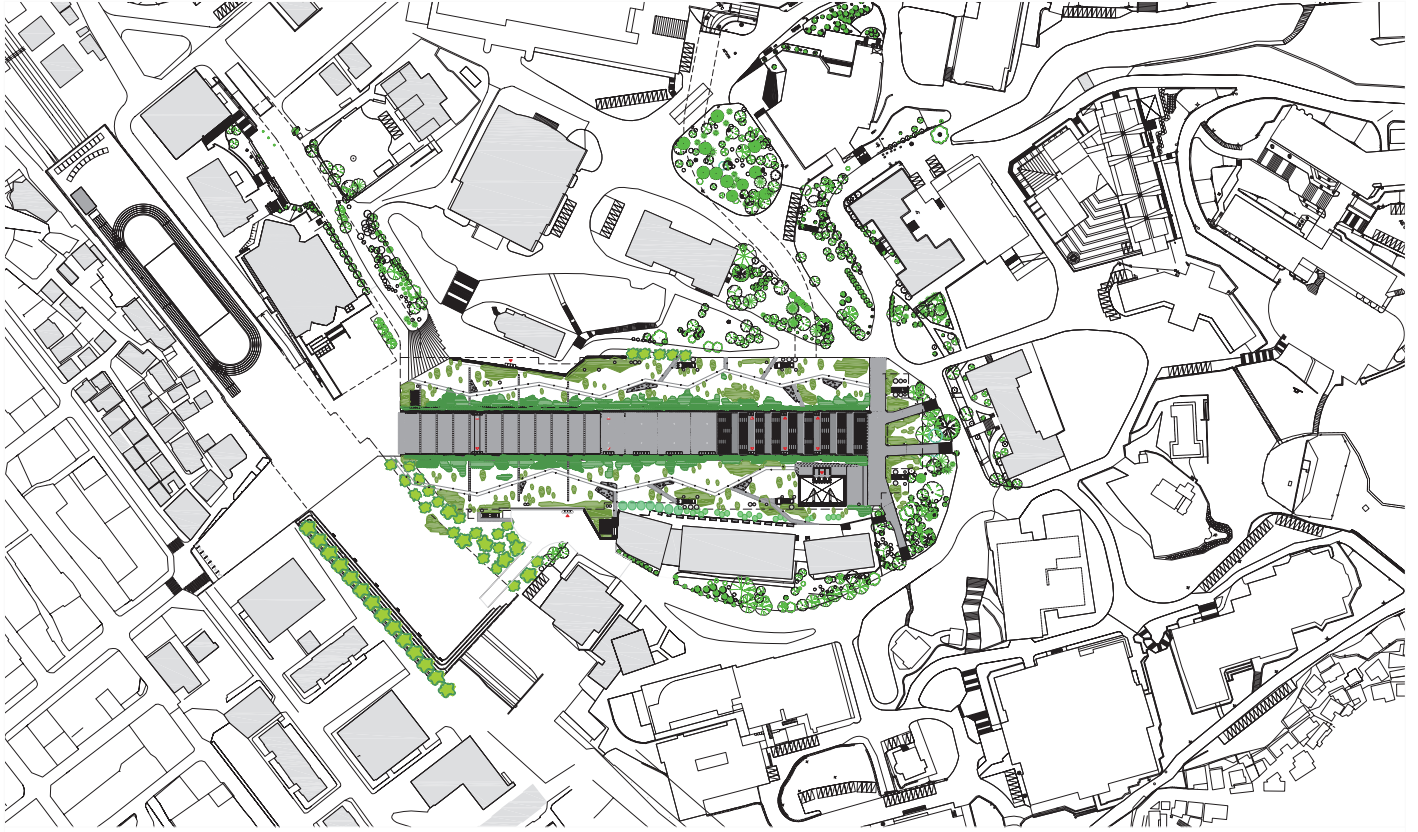
6:15pm: Celebration ceremony for the 10th anniversary of the ECC's construction

6:30pm: **With Music "Four Seasons for Ewha"**, Celebratory performance by the College of Music at Ewha Womans University

Director: Won, Young-Seok (Professor, College of Music)

7:00pm: **With Movie "Four Screens for ECC"** Video of Kim Okgill, video of musical performances  
Director: Cho, Duck-Hyun (Professor, College of Art & Design)

THE 10TH ANNIVERSARY OF EWHA CAMPUS COMPLEX  
DOMINIQUE PERRAULT ARCHITECT



0 10 20 50  
ROOF PLAN

©Dominique Perrault Architecte/ Adagp



Ewha Campus ©Gaëlle Lauriot-Prévost/Dominique Perrault Architecte/Adagp

THE 10TH ANNIVERSARY OF EWHA CAMPUS COMPLEX  
DOMINIQUE PERRAULT ARCHITECT



« The Campus Valley »

*The complexity of the immediate site through its relationship to the greater campus and the city of Shinchon to the south demands a “larger than site” response, an urban response, a global landscaped solution which weaves together the tissue of the EWHA campus with that of the city. This gesture, the “campus valley”, in combination with the “sports strip”, creates a new topography which impacts the surrounding landscape in a number of ways. The Sports Strip, like the Valley, is many things at once. It is a new gateway to the Ewha campus, a place for daily sports activities, a grounds for the special yearly festivals and celebrations, and an area which truly brings together the university and the city. It is most importantly a place for all, animated all year long.*

*Like a horizontal billboard, the sports strip presents the life of the university to the inhabitants of Shinchon, and vice-versa. Once through the sports strip, pedestrian movement and flow through the site is celebrated. A new “Champs Elysées” invites the public into the site carrying students and visitors alike through the campus center northwards, bringing together the different levels of the site.*

*The pastoral nature of the campus is perhaps its most remarkable quality. It should be permitted to grow outwards, or inwards in this case, covering the campus center with trees, flowers, and grass. The park is re-drawn. An idyllic garden is the result, creating a special place for gathering, conducting informal classes, and simply relaxing. The notion of weaving together the campus is again evident, blurring the distinction between old and new, building and landscape, present and past.*

« Les Champs Elysées »

*A new seam slices through the topography revealing the interior of the EWHA campus center. A void is formed, a hybrid place, in which a variety of activities can unfold. It is An avenue, gently descending, controlling the flow of traffic, leading to a monumental stair carrying visitors upwards, recalling les Champs Elysees or the Campidoglio in Rome.*

- *An entry court, from which access to the various departments exist,*
- *A node, or point on a trajectory to another destination,*
- *A forum for the exchange of ideas as students gather after class to discuss their views,*
- *A piazza, with the cafeteria spilling out creating a real “place” to stop and relax,*
- *An outdoor theatre, as the stair can be used in an amphitheatre like fashion,*
- *A sculpture garden, where indoor gallery events can push outwards.*

*It is precisely this flexibility (conceptual and real) which permits the New EWHA campus center to inevitably weave itself into the landscape sometimes a building, sometimes a landscape, sometimes a sculpture.*

Dominique Perrault  
Paris, january 20th, 2004

# THE 10TH ANNIVERSARY OF EWHA CAMPUS COMPLEX

DOMINIQUE PERRAULT ARCHITECT

GANGNAM INTERNATIONAL TRANSIT CENTER, SEOUL



Ewha Campus ©André Morin / Dominique Perrault Architecte/Adagp

## INTERNATIONAL COMPETITION BY INVITATION : winning project february 2004

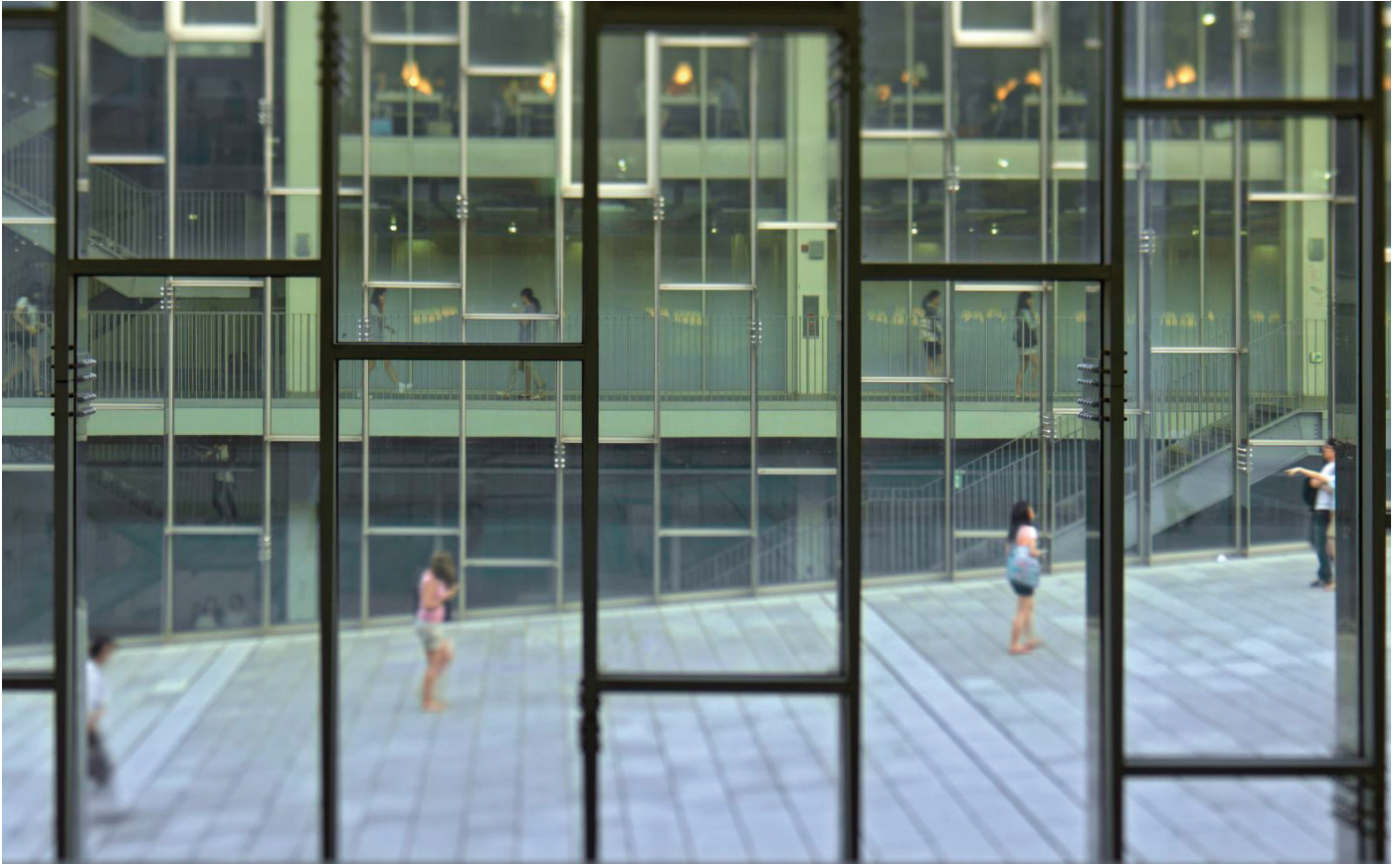
2010 : Afex prize

2009 : Green Good Design, Environment / Landscape Architecture Award

2008 : Seoul Metropolitan Architecture Award, first prize

- **Location :** 1-1 Daehyundong, Seodaemun\_gu, Séoul 120-750, Corée
- **Beginning of conceptual design:** 2004
- **Beginning of construction :** End 2005
- **End of construction :** march 2008
- **Inauguration:** April 29th 2008
- **Client:** Ewha Womans University, 11-1 Daehyundong, Seodaemun-gu, Seoul 120-750, Korea
- **Architect:** Dominique Perrault Architecte (DPA/Paris)
- **Art Director:** Gaëlle Lauriot-Prévost (DPA/Paris)
- **Partners:** Baum Architects (Séoul)
- **Engineering:**
  - architectural engineers: Perrault Projets, Paris
  - building services: HL-PP Consult, Munich
  - facades: Rache-Willms, Aix-la-Chapelle
  - acoustic, lighting : JP Lamoureux, Paris
  - structural engineers : PèVP & Green Ingénierie, Paris
- **Consultants:**
  - landscape design: CnK Associates, Séoul
  - civil engineer: CG E&C, Séoul
  - mechanical engineer : HIMEC, Séoul
  - structural engineer : Jeon and Lee Partners, Séoul
- **Site area:** 50 000 m<sup>2</sup>
- **Built area:** 70 000 m<sup>2</sup>
- **Built volume:** 350 000 m<sup>3</sup>
- **Landcaping:** 31 000 m<sup>2</sup>
- **Costs:** 77,8 Meuros

THE 10TH ANNIVERSARY OF EWHA CAMPUS COMPLEX  
DOMINIQUE PERRAULT ARCHITECT



Ewha Campus ©Agence VU/Dominique Perrault Architecte/Adagp

## Program

Creation of a university campus for approximately 22 000 students, with an academic program, an administrative program and a commercial program:

### • **academic program :**

- classrooms, 3 600 m<sup>2</sup>
- 2 amphitheatres 90 seats
- 2 amphitheatres 200 seats
- library 2 000 m<sup>2</sup>
- computer rooms, workshop space and study hall 6 000 m<sup>2</sup>
- 4 amphitheatres 80 seats
- hall and common use spaces, 15 0000 m<sup>2</sup>

### • **administrative program, 2 300 m<sup>2</sup>**

- office spaces
- service areas

### • **commercial program, 5 700 m<sup>2</sup>**

- 2 screen cinema 162 seats
- shops 1 723 m<sup>2</sup>
- bank 100 m<sup>2</sup>
- Post, 300 m<sup>2</sup>
- fitness club, 1 000 m<sup>2</sup>
- restaurant, 600 m<sup>2</sup>
- theatre 750 seats

- underground car park, 750 vehicles capacity
- chapel, 200 m<sup>2</sup>
- student plaza, 1 000 m<sup>2</sup>
- student theater and exhibition hall 1 000 m<sup>2</sup>

THE 10TH ANNIVERSARY OF EWHA CAMPUS COMPLEX  
DOMINIQUE PERRAULT ARCHITECT



Ewha Campus ©Dominique Perrault Architecte/Adagp



THE 10TH ANNIVERSARY OF EWHA CAMPUS COMPLEX  
DOMINIQUE PERRAULT ARCHITECT



Ewha Campus ©André Morin/Dominique Perrault Architecte/ Adagp



Ewha Campus ©André Morin/Dominique Perrault Architecte/ Adagp

THE 10TH ANNIVERSARY OF EWHA CAMPUS COMPLEX  
DOMINIQUE PERRAULT ARCHITECT



Ewha Campus ©Agence VU/Dominique Perrault Architecte/Adagp

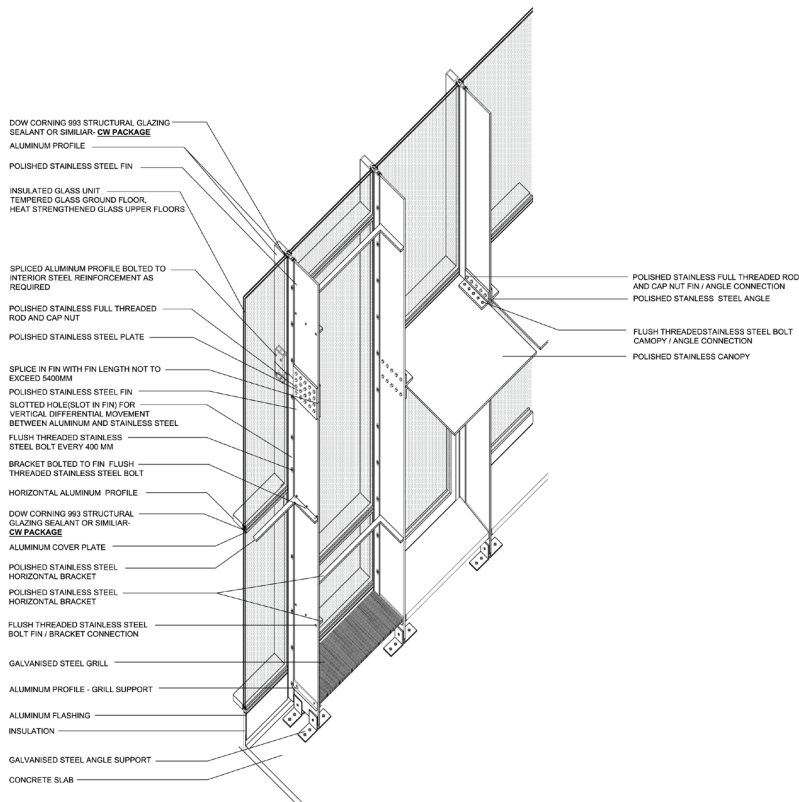


Ewha Campus ©André Morin/Dominique Perrault Architecte/Adagp

THE 10TH ANNIVERSARY OF EWHA CAMPUS COMPLEX  
DOMINIQUE PERRAULT ARCHITECT



Ewha Campus ©André Morin/Dominique Perrault Architecte/Adapp



Ewha Campus ©André Morin/Dominique Perrault Architecte/Adapp

# THE 10TH ANNIVERSARY OF EWHA CAMPUS COMPLEX

## DOMINIQUE PERRAULT ARCHITECT

### A SUSTAINABLE CAMPUS

#### Green roof

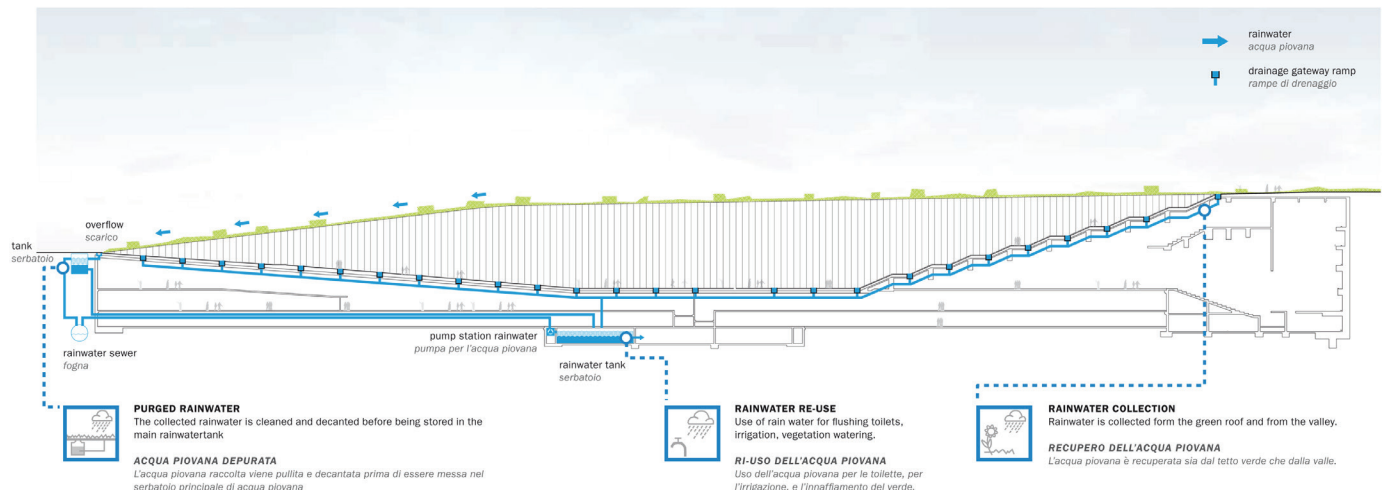
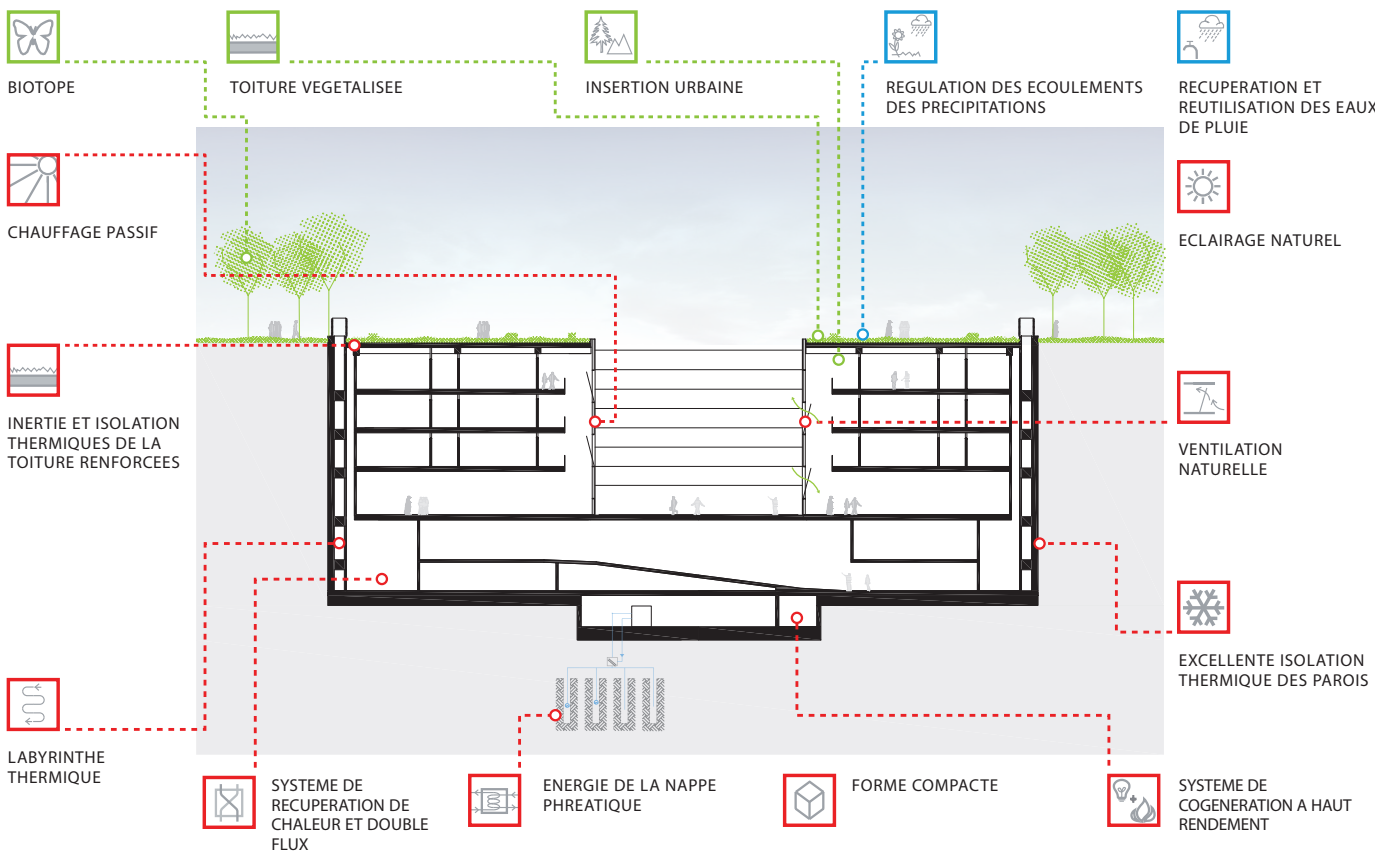
Besides the aesthetic and psychological benefits, numerous ecological benefits include:

- Enhanced Ecology - The roof offers dramatic biodiversity benefits, pollution absorption and contributes to noise reduction.
- Mitigation of storm water - The rapid run-off from roof surfaces can often result in flooding or extensive increase in drainage capacity. A major benefit of green roofs is their ability to absorb storm-water and release it slowly over a period of several hours.
- Improved roof temperature - The protection of fluctuations in temperature helps reduce internal energy consumption.

#### Water efficiency

The benefits of the proposed green roof have been described. In addition to this, measures to reduce potable water consumption have been used including

- Low water using fittings,
- Rainwater collection: rainwater is collected from the roof, stored, and then used as the needs arise.



THE 10TH ANNIVERSARY OF EWHA CAMPUS COMPLEX  
DOMINIQUE PERRAULT ARCHITECT



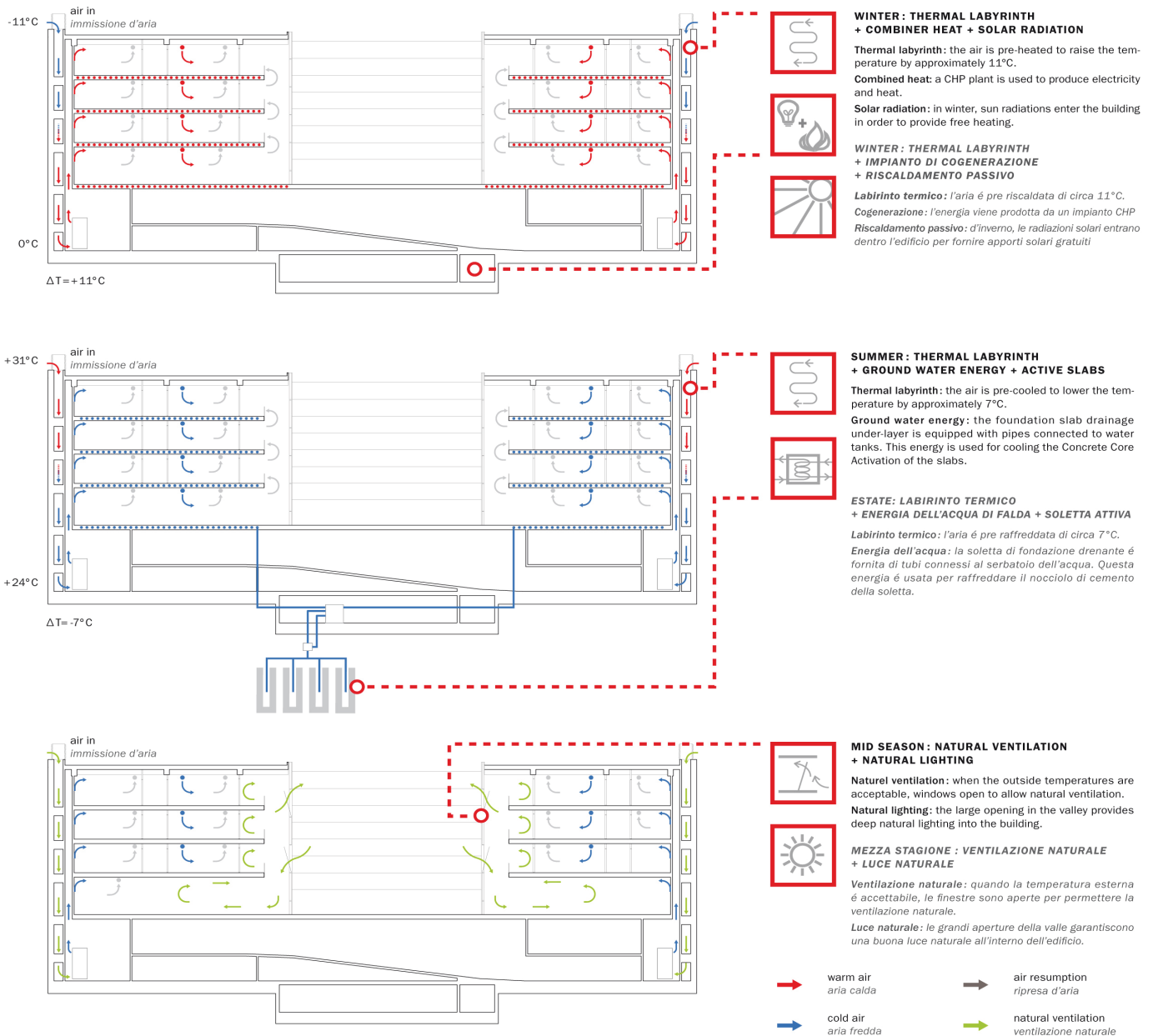
Ewha Campus ©Agence VU/Dominique Perrault Architecte/Adagp



Ewha Campus © Dominique Perrault Architecte/Adagp

# THE 10TH ANNIVERSARY OF EWHA CAMPUS COMPLEX

## DOMINIQUE PERRAULT ARCHITECT



### Natural resources and renewable energy

The presence of structural retaining walls around the building led to the idea to use them as a media to harvest geothermal energy. The step by step system used to heat and cool the building combines :

- A thermal labyrinth through the retaining walls (pre-heating and pre-cooling of fresh air),
- Ground water energy (pre-cooling of fresh air during summer),
- A heat recovery system,
- A Combined Heat and Power Plant.

In the end, 80% (winter) and 70% (summer) of the energy demands are provided only by natural resources.

THE 10TH ANNIVERSARY OF EWHA CAMPUS COMPLEX  
DOMINIQUE PERRAULT ARCHITECT



Ewha Campus © Suk-Joon Yoon /Dominique Perrault Architecte/ Adagp



Ewha Campus ©Gaëlle Lauriot-Prévost/Dominique Perrault Architecte/ Adagp



© Domus China\_Dominique Perrault Architecte

Praemium Imperiale award winner, Dominique Perrault, leading figure in French architecture is a professor and director of the Underground Architecture Laboratory (SUB) at the Ecole Polytechnique Fédérale de Lausanne in Switzerland. He is also the founder of DPAX, a multidisciplinary research platform exploring architecture from a wider perspective.

He gained an international recognition after winning the competition for the National French library in 1989 at the age of 36. This project marked the starting point of many other public and private commissions abroad, such as The Velodrome and Olympic swimming pool of Berlin, the extension of the European Court of Justice in Luxembourg, the Olympic tennis Center in Madrid, the campus of Ewha's University in Seoul, and the Fukoku Tower in Osaka, Japan. In 2014, he delivered the DC Tower in Vienna, the tallest tower in Austria, an icon of the new business district, as well as the Grand Theatre in Albi, France.

In 2016 he published the book "Groundscape - Other topographies", dedicated to his research work about the underground architecture, theme introduced since his first projects. He received many prestigious prizes and awards, including the

"Grande Médaille d'or d'Architecture" from the Académie d'Architecture in 2010, the Mies van der Rohe prize, the French national Grand Prize for Architecture, the Equerre d'argent prize for the Hotel Industriel Berliet and the Seoul Metropolitan Architecture Award as well as the AFEX Award for the Ewha Womans University in Korea. In 2015 he was elected at the French Academy of Fine Arts.

In 2016, Dominique Perrault completed three major rehabilitation and extension projects, including the Pont de Sèvres Towers – Citylights in Western Paris, the new mechanicals hall of the École Polytechnique Fédérale in Lausanne as well as the Dufour Pavilion, new entrance of the Château de Versailles.

Current studies and urban research projects include the Olympic Village – Paris 2024, a new transit center in Gangnam, Seoul, the new Villejuif-IGR station of the Grand Paris Express, and the "Mission Ile de la Cité," an urban study commissioned in December 2015 by the president of the French Republic François Hollande that

reflects upon the future of the thriving, historical center of Paris from now until 2040. The new Paris Longchamp racecourse will be inaugurated in April 2018, and the new Poste du Louvre in early 2019.





Ewha Campus © Agence VU/Dominique Perrault Architecte/Adapp

Twitter  
@dpa\_official

Instagram  
dominiqueperrault

Facebook  
Dominique Perrault Architecture

Dominique Perrault  
Architecte

6, rue Bouvier 75011 Paris  
+33 (0) 1 44 06 00 00

[www.perraultarchitecture.com](http://www.perraultarchitecture.com)

DOMINIQUE PERRAULT ARCHITECTE 6, rue Bouvier 75011 Paris, France +33 (0)1 44 06 00 00 [www.perraultarchitecture.com](http://www.perraultarchitecture.com)