

Dominique Perrault Architecte

LIGHTWALK

GANGNAM INTERNATIONAL TRANSIT CENTER, SEOUL



COMPETITION WINNER

DOMINIQUE PERRAULT ARCHITECTE
&
JUNGLIM CONSORTIUM SEOUL

DPA
6, rue Bouvier 75011 Paris
www.perraultarchitecture.com
+33 (0) 1 44 06 00 00

Press contact DPA
Camille Abeille
cabeille@d-pa.fr

LIGHTWALK

GANGNAM INTERNATIONAL TRANSIT CENTER, SEOUL



the Lightwalk ©Rayus_Dominique Perrault Architecte

INTERNATIONAL COMPETITION: 1st prize

WINNING ARCHITECT: Dominique Perrault Architecture (DPA/Paris) with Junglim Consortium (Seoul)

CLIENT: SEOUL METROPOLITAN GOVERNMENT

design leader Dominique Perrault Architecte (DPA/Paris)

consortium DPA, Paris

Junglim, Seoul

Space Group, Seoul

Yooshin Engineering, Seoul

Sunjin Engineering, Seoul

Teso Engineering, Seoul

expertise Topotek 1, landscape architect, Berlin

Jean-Paul Lamoureux, acoustic adviser, Paris

competition: july - october 2017

achievement: 2023

location: Yeongdong daero street, Gangnam, Seoul

site area: 60 000m²

built area: 160 000m²

programm:

- Multimodal hub: 95'000m²
 - New train station (4 new lines: GTX A/C, KTX , Wiryae-Sinsa): 46'850m²
 - Extension of the existing metrostations, Samseung (Line 2) et Bongeunsa (Line 9): 16'305m²
 - Bus station: 3'180m²
- Park: 32'000m²
- Commercial complex: 72'142m²
 - event hall
 - exhibition spaces
 - coffee places,
 - restaurants
 - art galleries
 - offices
 - co-working spaces
 - learning center

LIGHTWALK

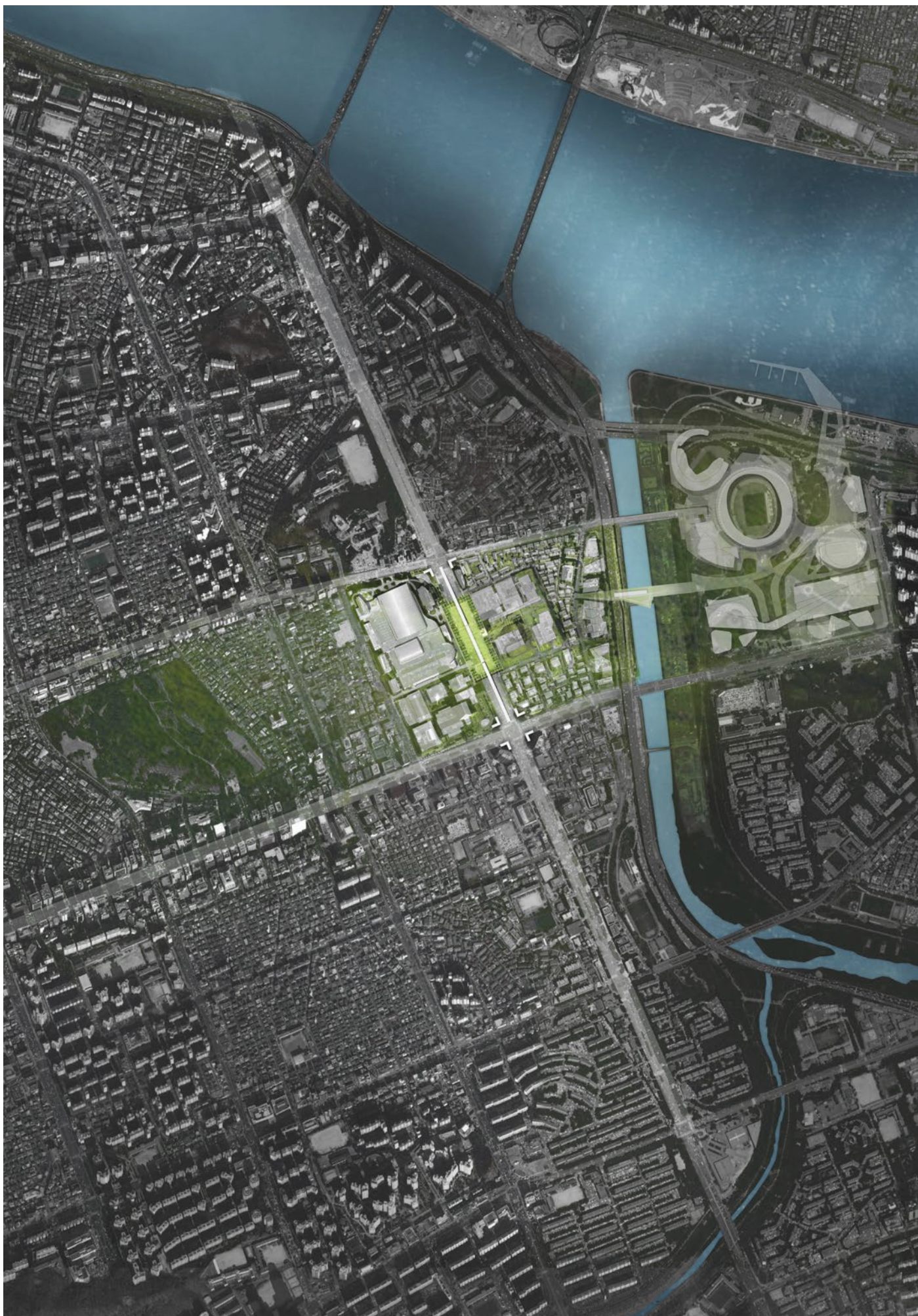


the Green Land ©Rayus_Dominique Perrault Architecte

Concept

The Lightwalk is not only an architectural component, it also is a part of the territory and the ground of the city. Defined as a Land Art intervention, it belongs to the city scale, in dialogue with the Han River and Tancheon Stream and the mountains in the background. It is a minimalistic, yet incredibly powerful gesture, which marks the presence of a new major integrated public transportation station for the city of Seoul. Spanning between the two main road of the Gangnam district, Bongeunsaro and Teheranro, the Lightwalk creates a landscape intervention linking the two axis and acts as an orientation mark from all sides. Like a ruler, a single line marks the territory and gives a measurement unit, in otherwise out of urban fabric scale, made out of stretched wide streets and skyscrapers such as a future GBC tower. The Lightwalk creates a new horizon. Rooted in the ground, it is the symbol of a renewed Seoul, which aims to become more pedestrian friendly, a landmark for all underground infrastructures worldwide, where users can experience natural light and air, deep into the ground, in the Groundscape.

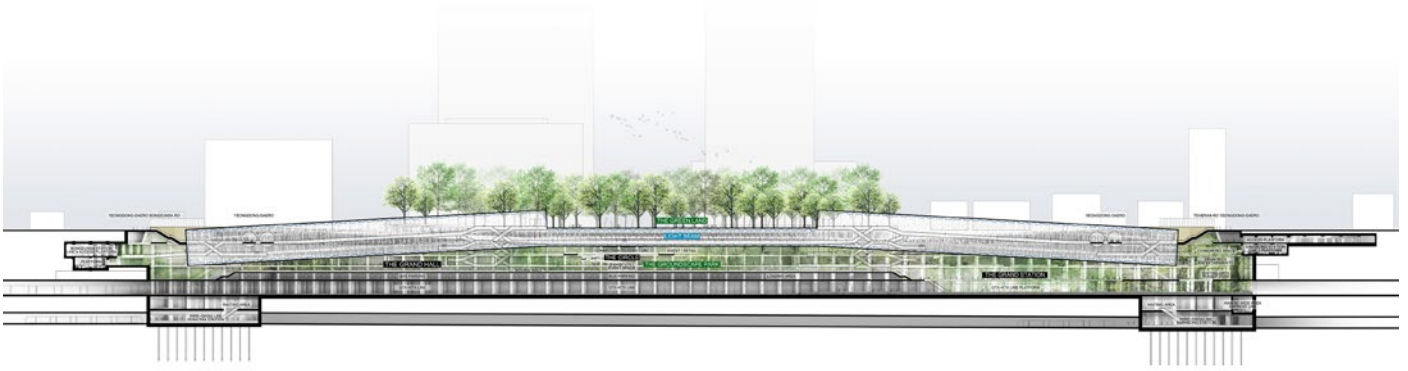
LIGHTWALK



Plan masse ©Dominique Perrault Architecte

Press kit - Lightwalk - Dominique Perrault Architecte - 2017

LIGHTWALK



Coupe longitudinale ©Dominique Perrault Architecte

Urban Core - the Lightwalk Urban Link - the Green Land Urban Light - the Light Beam

The Green Land : new heart of Gangnam

Implementing an airport size infrastructure in the middle of the city fabric implies a careful attention to ensure that the weaving of this new element will perfectly fit within the existing city while creating new links and comforts rather than boundaries or limits.

The cohesion of Seoul International District is made through a strong emphasis on a green network which weave all streets and plots together from the Jamsil MICE district in the East to the COEX to the West. Pedestrians will be offered a continuous tree canopy to experience a renewed urban quality leading to a new major landmark park offered to all Seoul habitants: The Green Land.

An Urban square, a domestic scale

To a much different scale, the Green Land, covering about 28 000 sqm, will be Gangnam's response to New York's central park or London's Hyde Park. It will become the central point of the new green network in order to become the green heart of the Seoul International District, creating a new centrality between the COEX and the GBC. In order to develop and strengthen the existing green network, existing tree rows are extended and new ones added, establishing a 'Green Weave' at the district scale, stretching from 'The Green Land' towards the eastern riverfront. The new planting strategy

connects the existing green structures bordering the site but also extends throughout the district.

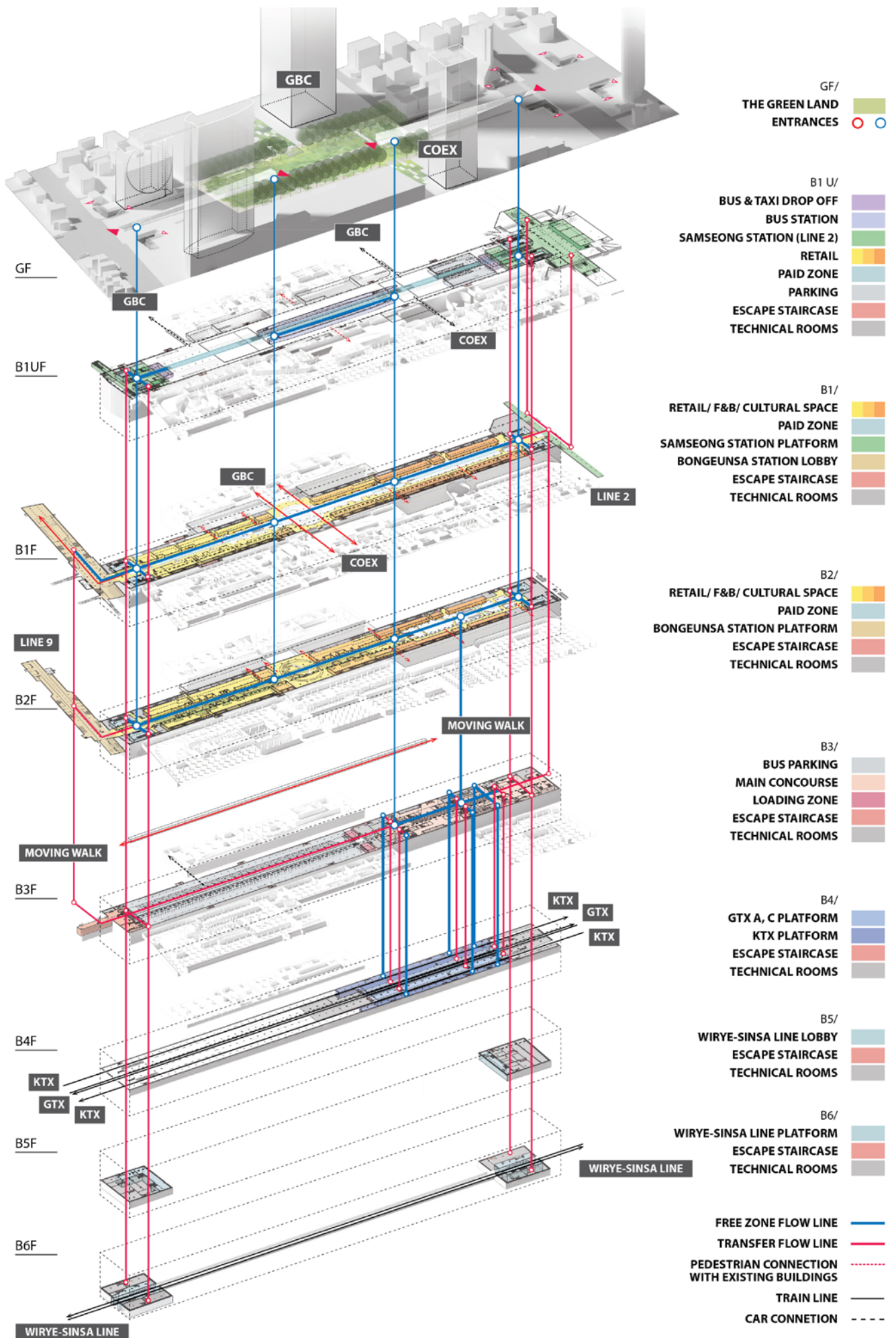
He's protected on four sides by a double line of high canopy trees covering an intimate promenade in reference to the Palais Royal Garden in Paris. The tree frame creates a foreground allowing a transition between intimate human scale on ground level and the city scale of the surrounding towers as well as an acoustic shield from the hustle and bustle of the street. Everyday users will find pocket parks and a variety of ambiances to enjoy such as kid's playground, relaxing areas, cafes, kiosks, amenities and services.

Flexibility of Uses / Seasonal Changes

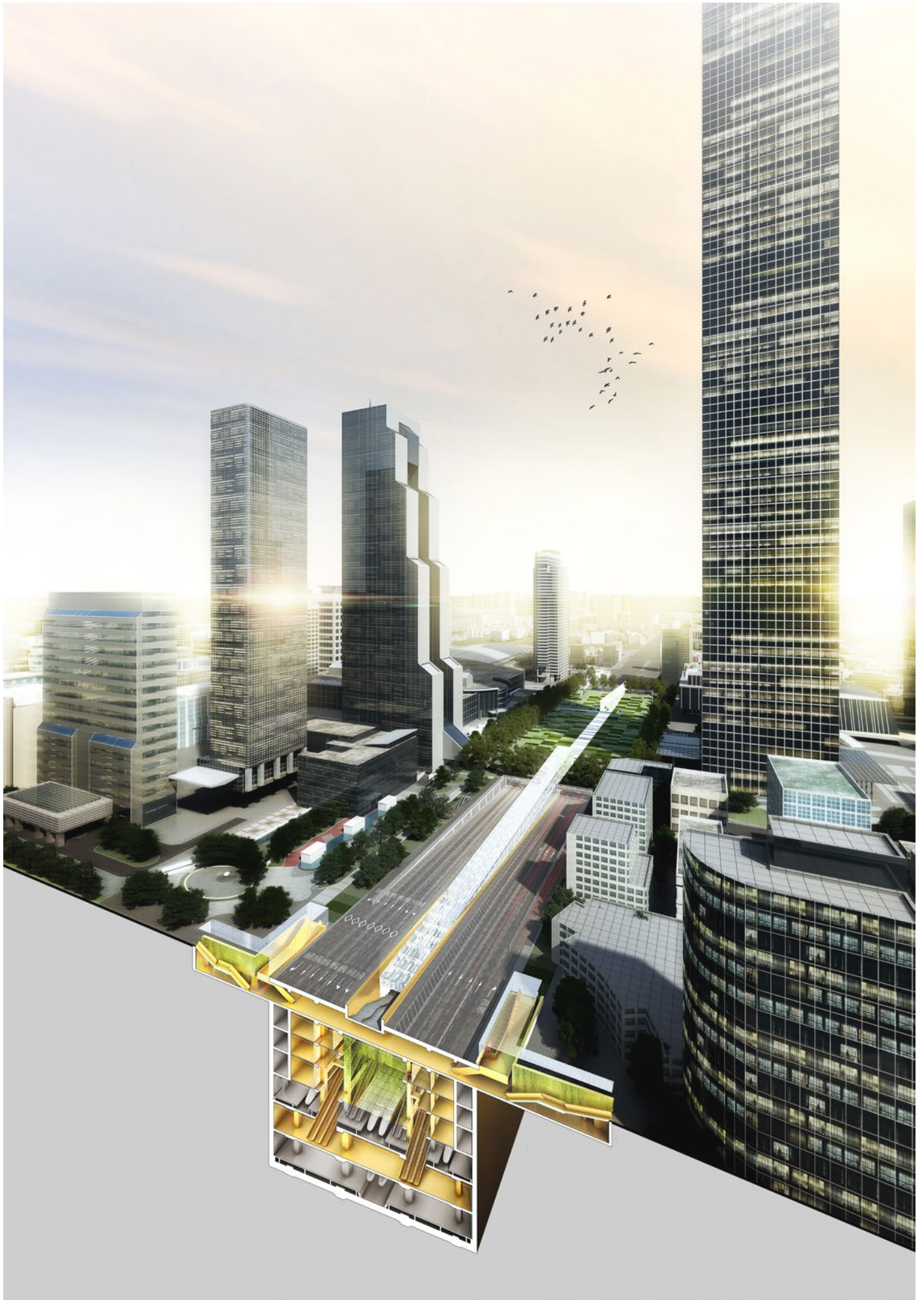
The central meadow is designed to allow the greatest flexibility of uses during the year, a space where everything becomes possible. Through its flexibility the park, like the trees and flowers will express the passing of time and the changing of season, allowing a wide variety of activities to take place along the year, from simply relaxing on the grass to a concert or a fireworks, a fair in spring, a festival in autumn, ice skating in winter, open air cinema or a food market in summer.

Yet, the ring of trees circling the Green Land will feature high canopy evergreen trees, so as to ensure it provides shelter and comfort all year around.

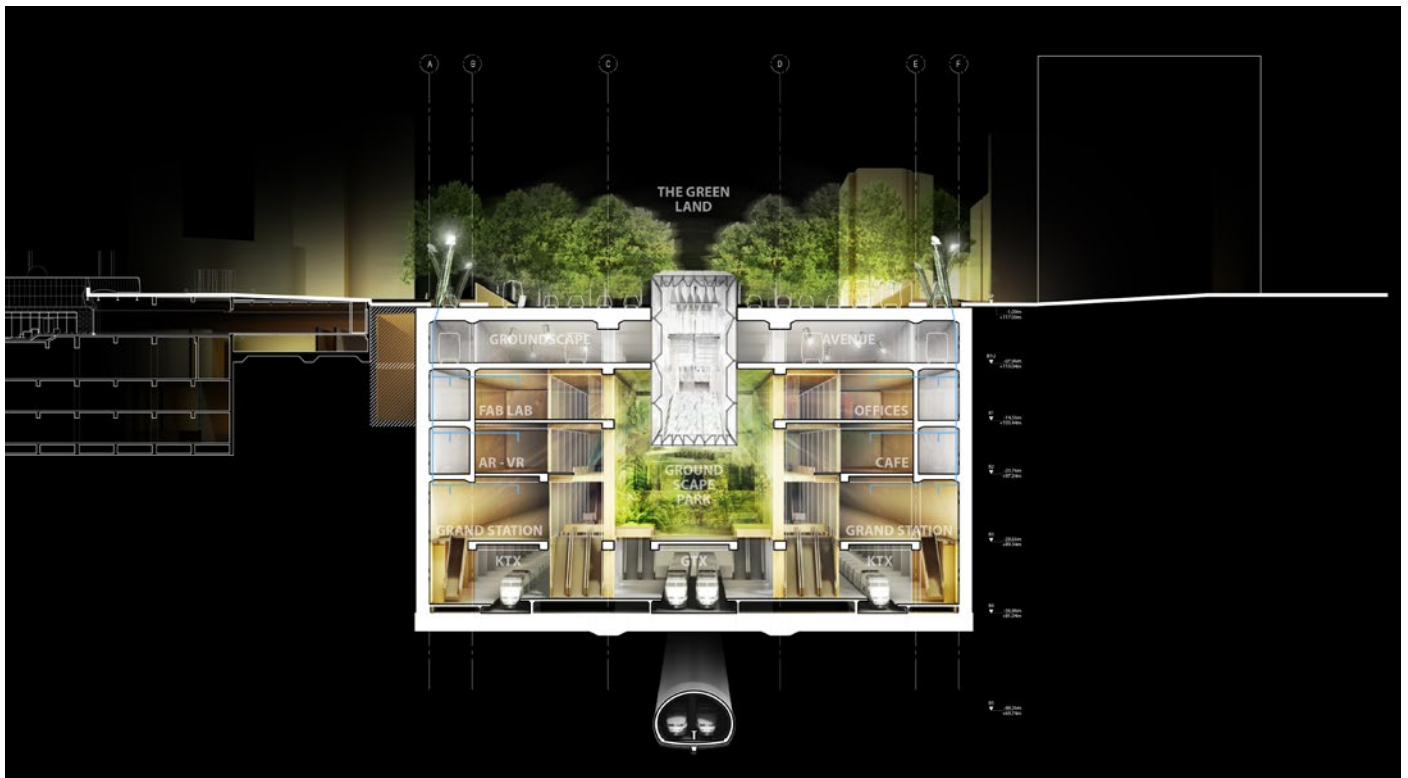
LIGHTWALK



LIGHTWALK



LIGHTWALK



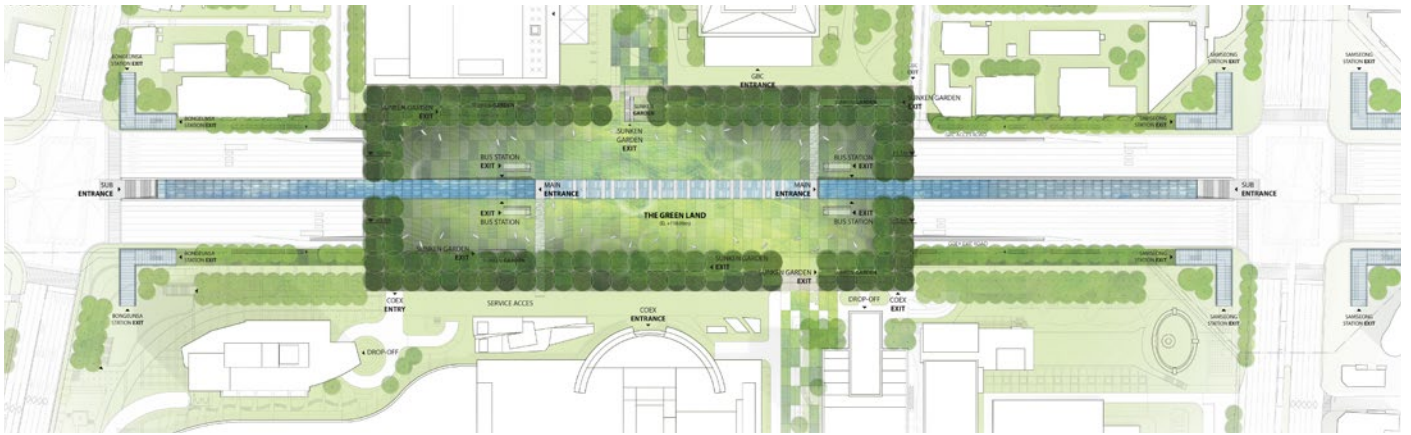
Coupe perspective ©Dominique Perrault Architecte



An efficient transit center, a flexible core

We wanted to design the most efficient transit center possible, with perfect vertical circulation systems, to ensure both comfort and safety for all users. All transit related spaces create a hull or shell, that is carefully designed and thought of. Inside this hull, or the hardware volumes as we call them, we propose to invent a new kind of flexible spaces, where we invite the City and all stakeholders to share a vision and define all kind of activities of 21st century city which should house such as co-working spaces, fabrication lab., art studios, galleries, workshops, and all new technologies facilities.

LIGHTWALK



Plan niveau parc ©Dominique Perrault Architecte



Plan niveau B2 ©Dominique Perrault Architecte

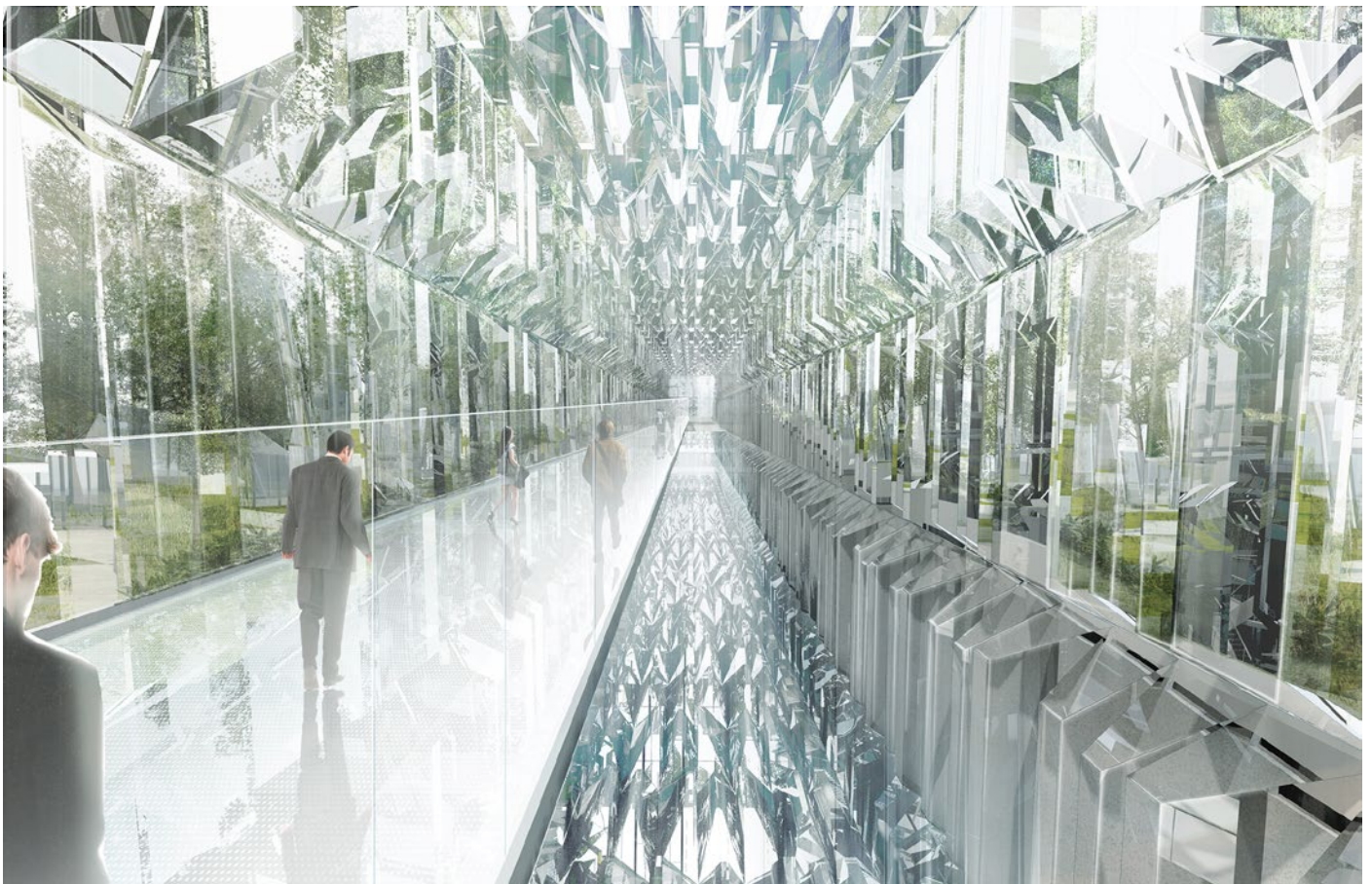


Concept du parc souterrain ©Dominique Perrault Architecte

LIGHTWALK



the Light Beam ©Rayus_Dominique Perrault Architecte



the Light Beam ©Rayus_Dominique Perrault Architecte

LIGHTWALK



the Light Beam ©Rayus_Dominique Perrault Architecte

Follow the light

The Lightwalk is not a building. It is a designless intervention, an engineered masterpiece, bringing light deep into the soil crust, enlightening all the spaces of the new station below, and bringing new qualities to the above ground spaces. The Light beam is not only an optical device. Through its urban presence, it signals the entrances to the station below. Whether you arrive by foot, bus, car or train, the Light beam shows you the way in and out. Once inside, the light beam becomes a circulation guiding the public all the way down. As opposed to the usual damp and dark tunnels found in Seoul, the Light walk road will be fully lit by natural light on all sides. Along the Light beam, car and bus passengers will walk through a series of sunken gardens and sunlight pipes, creating an array of natural light. Train passengers will feel like they arrive in a traditional above ground train station as the light beam brings light deep below, creating the effect of arriving below a skylight roof, thus providing an ethereal sensation upon entering.

The light beam

In reference to French well known Pampille or Tassel system used to increase Chandelier candle light in the old days, the light beam is used as a technical and optical instrument for controlling light, temperature and humidity. The light beam is an optical installation creating a diffraction of the sunlight and amplifies its effects towards the lower levels. Through light beam, the interior spaces are flooded with natural light creating an interior atmosphere which feels like being outdoor.

With the light beam, the sunlight pipes collect and concentrate the sunlight above ground. The pipes introduce natural light below ground to ensure the indoor environmental quality. At night, it becomes moonlight pipes bring light on ground park and give a very special atmosphere.

LIGHTWALK



the Grand Station ©Rayus_Dominique Perrault Architecte



the Circle ©Rayus_Dominique Perrault Architecte

LIGHTWALK



the Great Hall ©Rayus_Dominique Perrault Architecte

The underground park

The GITC will house a unique underground park. The interior programs are articulated around the groundscape park spanning all along the project, flooded by the natural light provided by the light beam. Greeneries will be installed everywhere possible, on the ground, walls, ceiling, natural and artificial, water features will be combined to create a unique park. A variety of gardens can be organized along the Groundscape park with a wide varieties of vegetation species and ambiances.

The Grand Station

On the South tip, Seoul Grand Station is a reference to the worlds most iconic train stations. It is designed for a timeless experience and users comforts. All vertical circulations have been designed to ensure a smooth and seamless flow all the way up.

The Circle

The central event space, celebrating the connection between the four axis around a spiral circulation creating a threedimensional connection between the different levels and connecting both GBC and COEX.

The Great Hall

On the Northern tip, a more intimate volume in direct contact with the light beam offers incredible natural light and closest connections to above ground park.



© Domus China_Dominique Perrault Architecte

Praemium imperial award winner (Japan), the French architect and urban planner, Dominique Perrault, is a professor and director of the Underground Architecture Laboratory (SUB) at the Ecole Polytechnique Fédérale de Lausanne in Switzerland. He is also the founder of DPAX, a multidisciplinary research platform exploring architecture from a wider perspective, and DPA Lab, a laboratory of research and innovation developing processes that reinvent the vocabulary of architecture.

Along with the Bibliothèque nationale de France, his main projects to date include the Olympic Velodrome and Swimming Pool in Berlin, the extension of the Court of Justice of the European Union in Luxembourg, the

Olympic Tennis Stadium in Madrid, the EWHU Woman's University in Seoul and the Fukuoka Tower in Osaka. In recent years, Dominique Perrault inaugurated the tallest tower of Austria in Vienna, the DC Tower 1, and led various heritage rehabilitation projects, including the new public entry pavilion for the Château de Versailles and the repurposing of La Poste du Louvre in Paris. Current studies and urban research projects include the Olympic Village – Paris 2024 and the "Mission Ile de la Cité," an urban study commissioned in December 2015 by the president of the French Republic François Hollande that reflects upon the future of the thriving, historical center of Paris from now until 2040.

LIGHTWALK

press material
visuels disponibles



©Rayus_Dominique Perrault Architecte_adagp



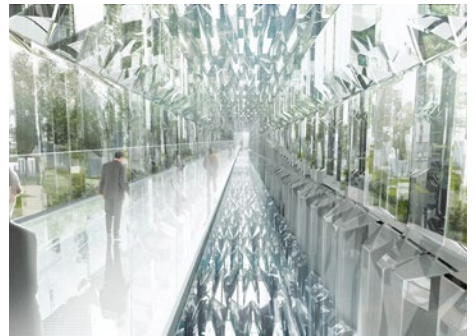
©Rayus_Dominique Perrault Architecte_adagp



©Rayus_Dominique Perrault Architecte_adagp



©Rayus_Dominique Perrault Architecte_adagp



©Rayus_Dominique Perrault Architecte_adagp



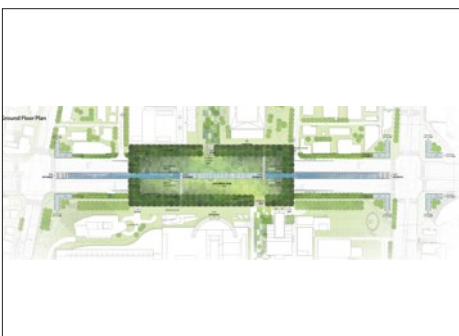
©Rayus_Dominique Perrault Architecte_adagp



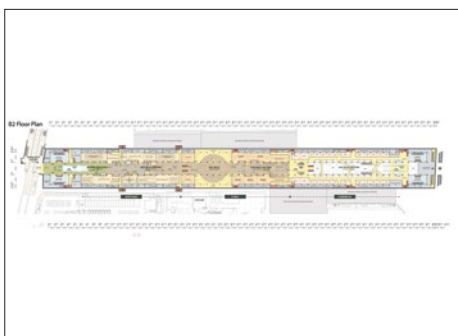
©Rayus_Dominique Perrault Architecte_adagp



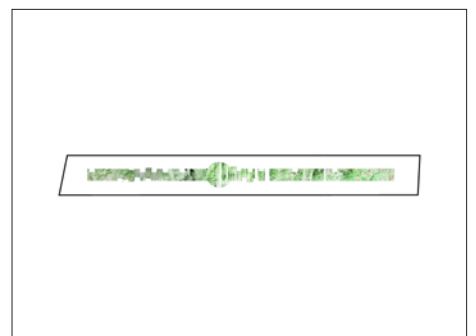
©Rayus_Dominique Perrault Architecte_adagp



©Rayus_Dominique Perrault Architecte_adagp



©Rayus_Dominique Perrault Architecte_adagp



©Rayus_Dominique Perrault Architecte_adagp



Twitter
@dpa_official

Instagram
dominiqueperrault

Facebook
Dominique Perrault Architecture

Dominique Perrault
Architecte

6, rue Bouvier 75011 Paris
+33 (0) 1 44 06 00 00

www.perraultarchitecture.com